

# DL 4PP Brochures

LANDSCAPE

SIZE: 210mm x 198mm - Scored to 210mm x 99mm



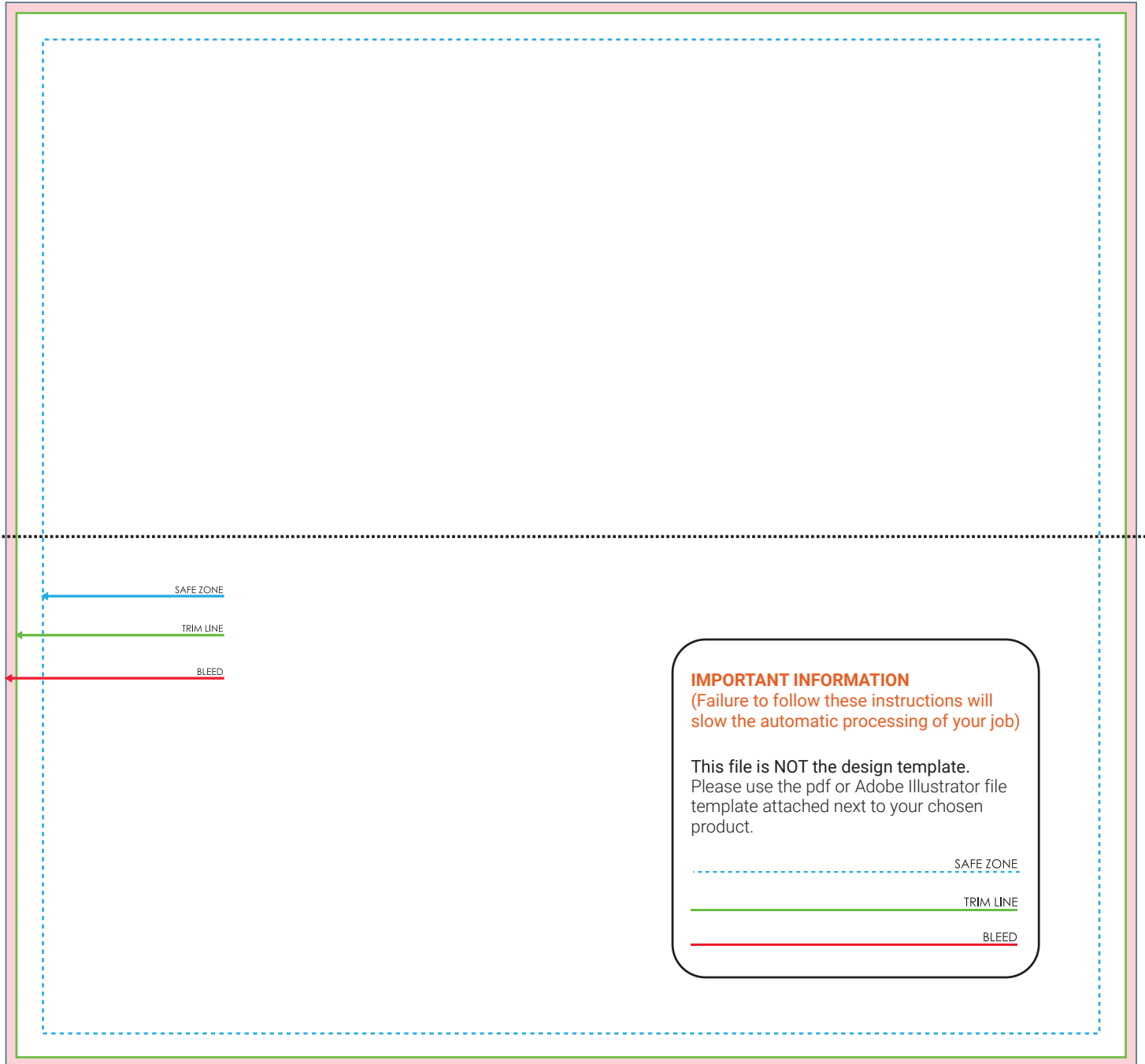
TRIM SIZE: 210mm x 198mm



BLEED: 214mm x 202mm



SAFE PRINT AREA: 204mm x 192mm

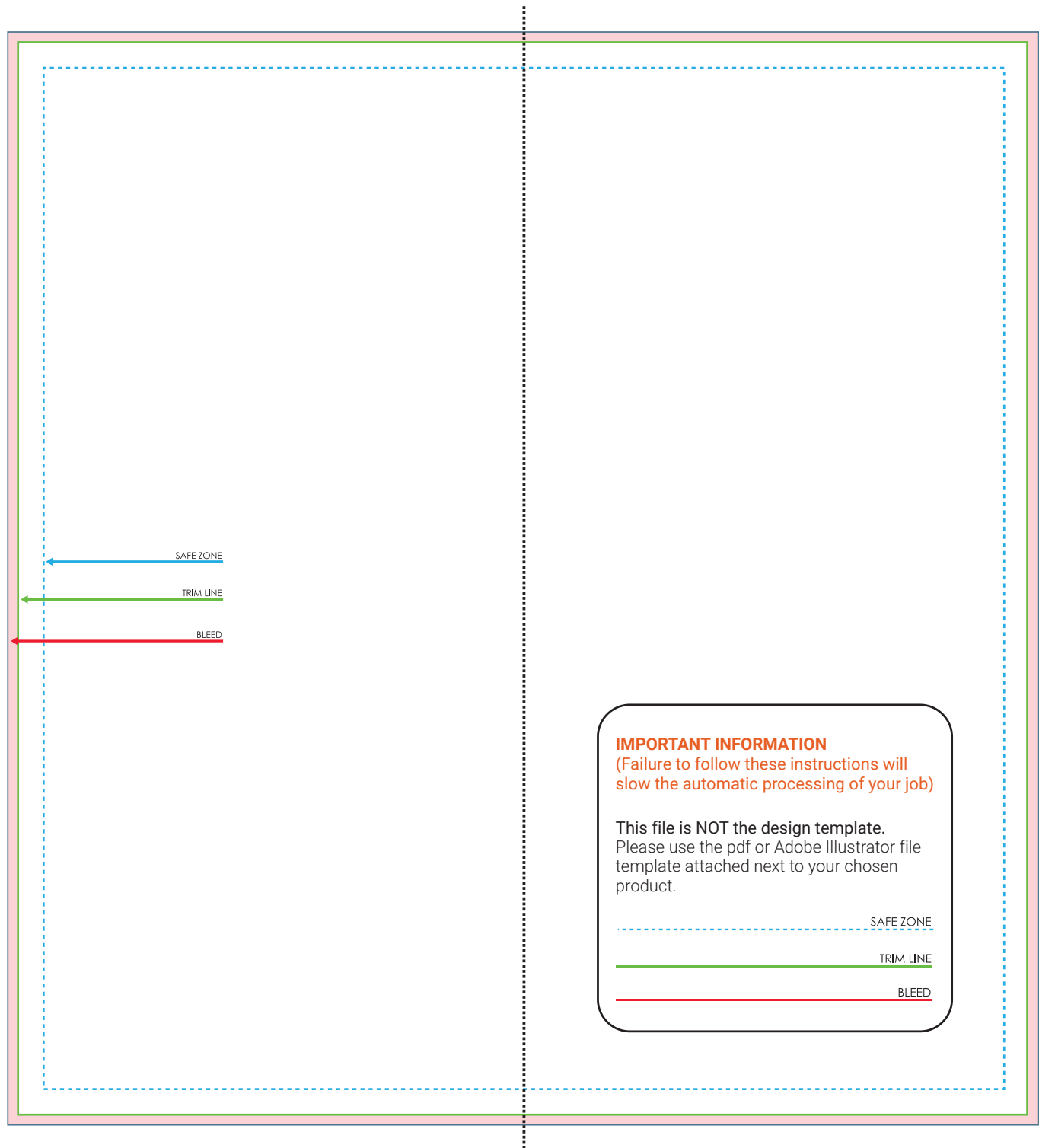


# DL 4PP Brochures

PORTRAIT

SIZE: 198mm x 210mm - Scored to 99mm x 210mm

 TRIM SIZE: 198mm x 210mm  BLEED: 202mm x 214mm  SAFE PRINT AREA: 192mm x 204mm

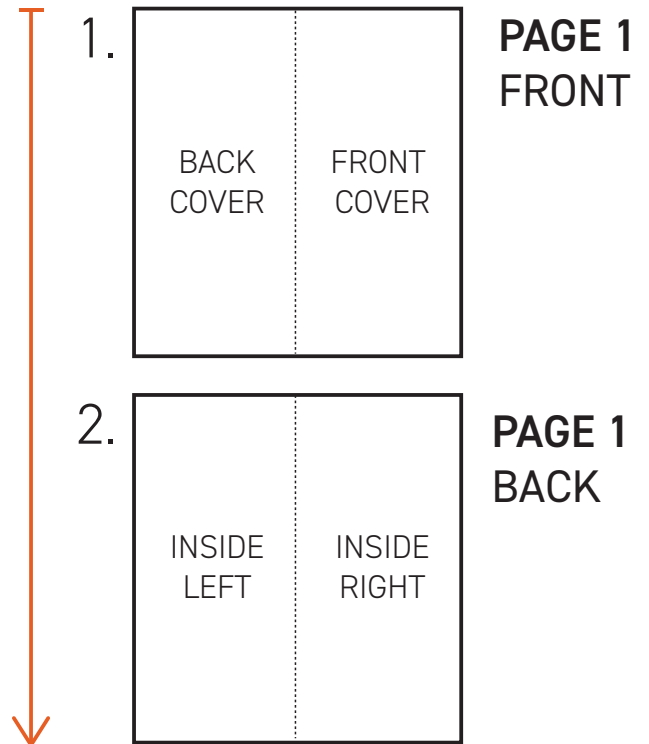


## DL 4PP Brochures

### PAGE SET UP IN FILE (PORTRAIT)

#### FOR A DL DOUBLE SIDED FLYER:

- Keep every page in one file. The final result will look like the diagram on the right.
- Two pages in order will print out as one. For example:  
**Page 1** will be the front and back cover and **Page 2** will print on the back of **Page 1** and have the inside contents.



#### WHEN PRINTED:

